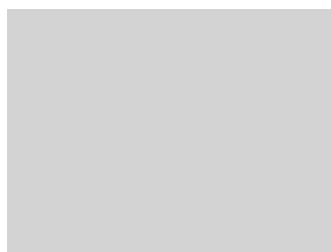
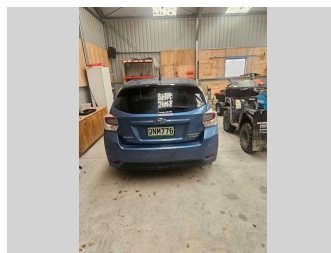
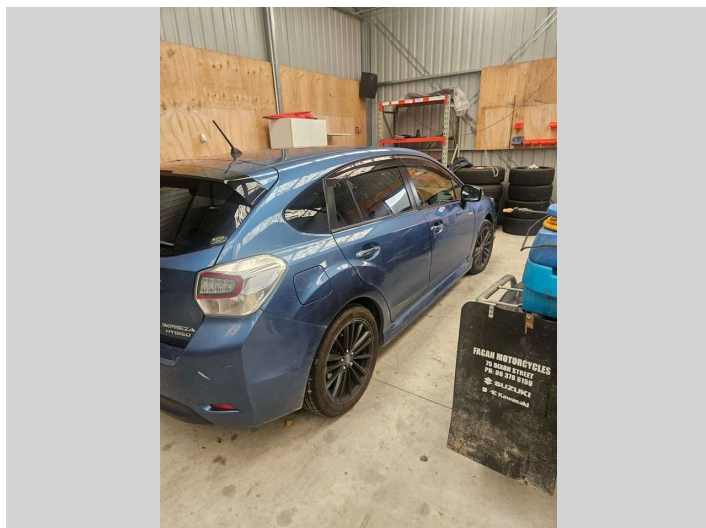



# 2016 Subaru Impreza HYBRID



**Purchase Price** **\$12,990**  
Includes GST, Registration & Licensing

Finance may be available on this vehicle. Ask one of our friendly staff for more information.



Gain peace of mind with Mechanical Breakdown Insurance. **Ask us how.**

**Top features**  
None Listed

Body Style  
**5 door, Hatch**

Odometer  
**93,707 km**

Engine  
**1995 cc, Hybrid**

Fuel Type  
**Petrol**

Transmission  
**Automatic, 4WD**

Wheels  
-

VIN  
**7AT0GF09X24030693**

Interior  
-

Safety



Based on 2025 UCSR rating for 12-16 models

Reg No.  
**QNM776**

Ext Colour  
**Blue**

History  
**Ex-Overseas, 1 owner**

Seats  
**5 seats**

CO2 Emissions  
**★★★★☆**  
**135 grams/km**

Energy Economy  
**★★★★☆☆**

**Annual fuel cost of \$2,270**  
**5.8L per 100km**

Cost per year is an estimate based on petrol price of \$2.80 per litre and an average distance of 14000 km. Emissions and Energy Economy figures standardised to 3P WLTP.

**Stock ID: 12740**