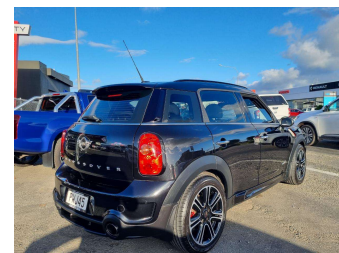
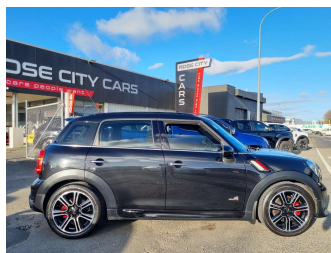



2016 BMW Mini JCW Crossover



Purchase Price **\$29,990**
Includes GST, Registration & Licensing

Finance may be available on this vehicle. Ask one of our friendly staff for more information.



Gain peace of mind with Mechanical Breakdown Insurance. **Ask us how.**

Top features
None Listed

Body Style
Hatch

Odometer
97,984 km

Engine
1590 cc

Fuel Type
Petrol

Transmission
Automatic

Wheels
-

VIN
WMWXD12050WS41634

Interior
-

Safety



Based on 2023 VSRR rating

Reg No.
PWJ45

Ext Colour
Black

History
Ex-Overseas

Seats
5 seats

CO2 Emissions
★★★★☆
212 grams/km

Energy Economy
★★★★☆

Annual fuel cost of \$3,570
9.1L per 100km

Cost per year is an estimate based on petrol price of \$2.80 per litre and an average distance of 14000 km. Emissions and Energy Economy figures standardised to 3P WLTP.

Stock ID: 11990



Rose City Cars | Email bevan@rosecitycars.co.nz
480 Rangitikei Street, Palmerston North 4410, New Zealand